



AUTOMOTIVE PRODUCTS,

INSTALLATION INSTRUCTIONS

CLASS III RECIEVER HITCH

APPLICATION:

2004-2012 Chevrolet Colorado

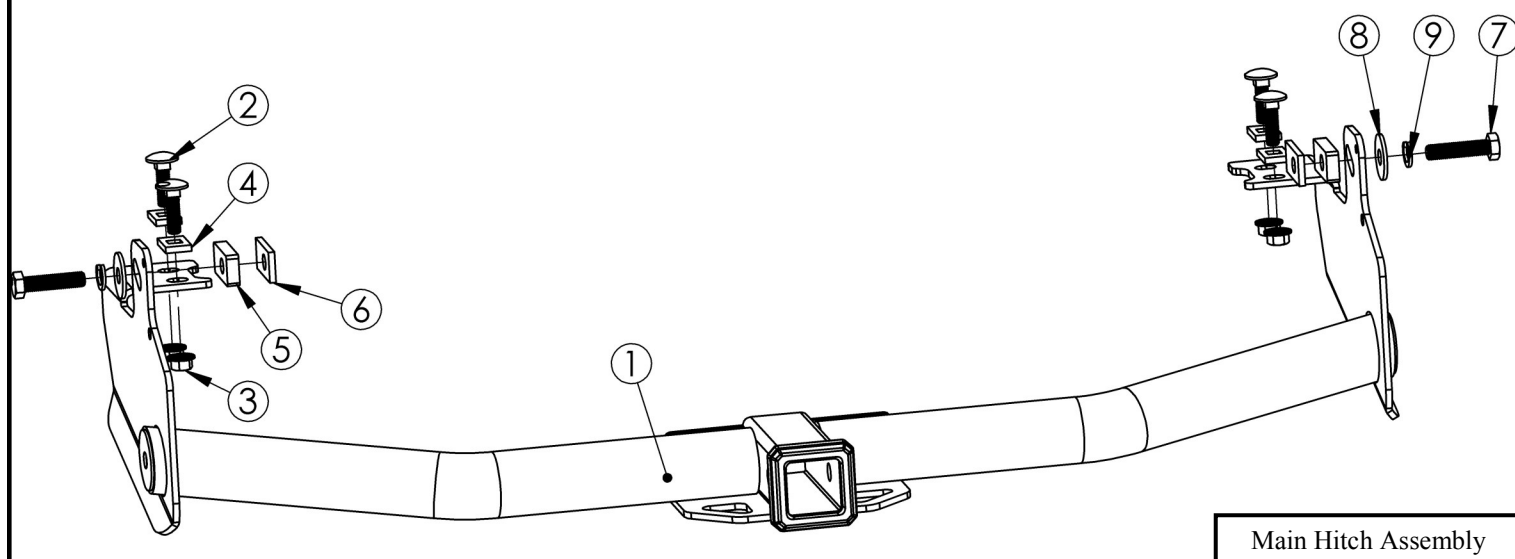
2004-2012 GMC Canyon

2006-2008 Isuzu I-Series

PART NUMBER: 65-1145

| ITEM | QUANTITY | DESCRIPTION | TOOLS NEEDED |
|------|----------|-------------------------------|---------------|
| 1 | 1 | HITCH ASSEMBLY | 18MM SOCKET |
| 2 | 4 | M12 CARRIAGE SQUARE NECK BOLT | 22MM SOCKET |
| 3 | 4 | M12 SERRATED FLANGE HEX NUT | 18MM WRENCH |
| 4 | 4 | M12 SQUARE HOLE BOLT PLATE | 22MM WRENCH |
| 5 | 2 | THICK SPACER | RATCHET |
| 6 | 2 | SPACER | TORQUE WRENCH |
| 7 | 2 | M14 HEX HEAD BOLT | |
| 8 | 2 | M14 FLAT WASHER | |
| 9 | 2 | M14 LOCK WASHER | |
| 10 | 2 | M12 FISH WIRE | |

ANTI-SEIZE LUBRICANT MUST BE USED ON ALL STAINLESS STEEL FASTENERS TO PREVENT THREAD DAMAGE AND GALLING



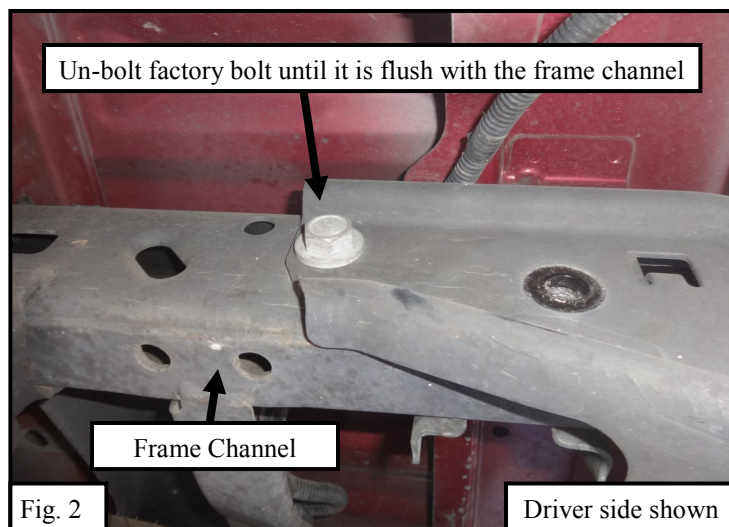
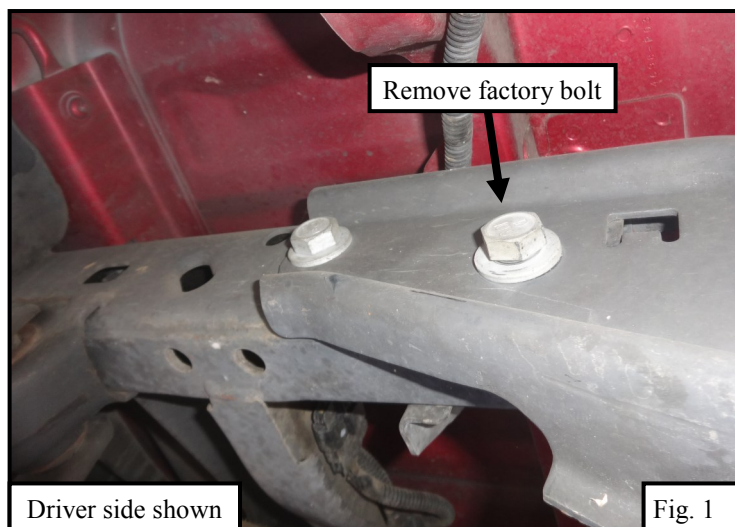
PROCEDURE

1. Remove contents from box, verify if all parts listed are present and free from damage.
Carefully read and understand all instructions before attempting installation.
Failure to identify damage before installation could lead to a rejection of any claim.

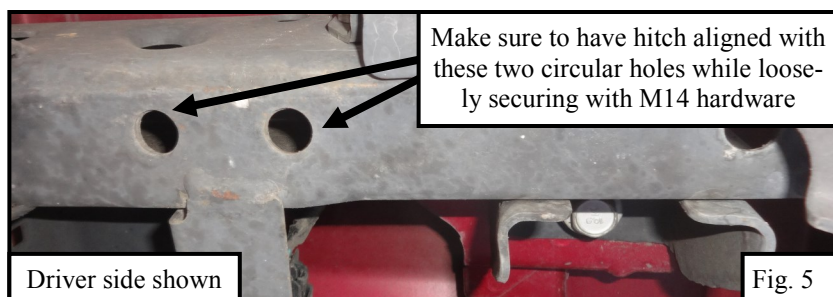
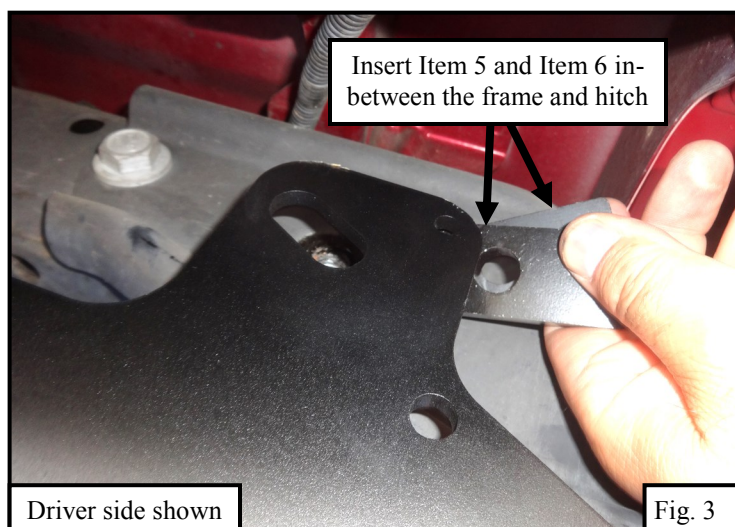


Westin Automotive Products, Inc.
320 W. Covina Blvd
San Dimas, Ca. 91773

2. Start installation by going to the rear of the vehicle and locating the mounting location on the frame. Remove factory bolt. **See Fig. 1.**
3. Un-bolt second factory bolt until it is flush against inside the frame channel. Do not remove bolt, it is to hold the bumper. When un-bolting bolt make sure that rear bumper does not move down. **See Fig. 2.**

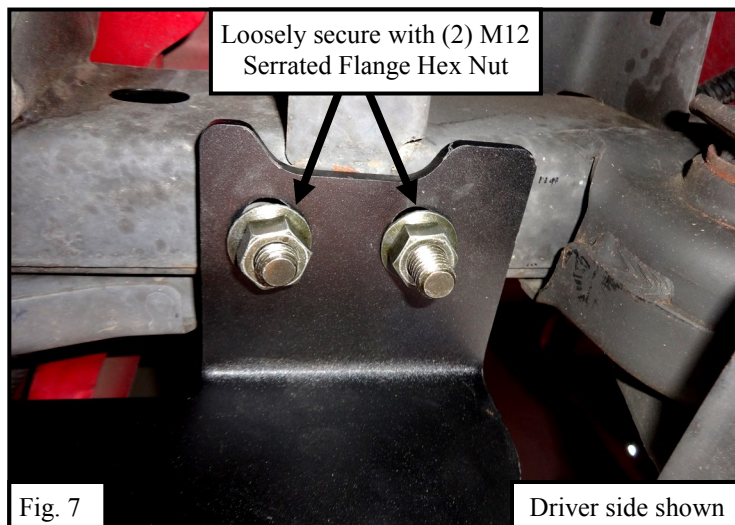
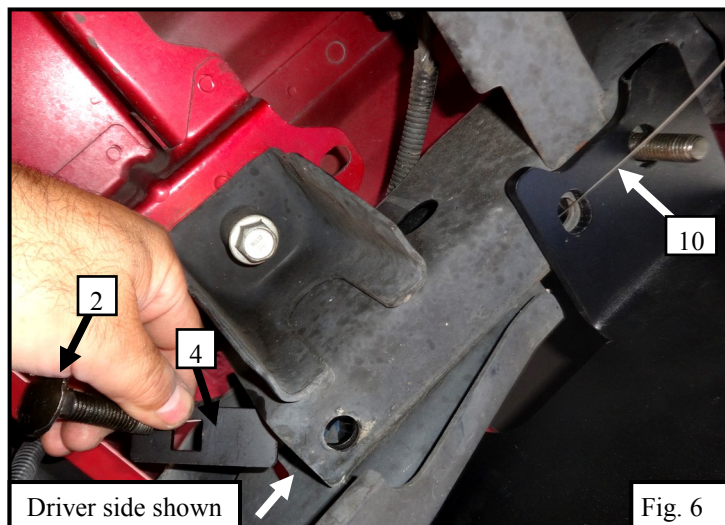


4. Locate the Hitch Assembly (Item 1) and with assistance align the hitch with the mounting hole. Then locate and insert the Thick Spacer (Item 5) and Spacer (Item 6) in-between the frame and hitch. Align spacer circular holes with the frame threaded hole. **See Fig. 3.**
5. Loosely secure hitch using the provided M14 hardware. **See Fig. 4.** (Note: Make sure to keep hitch aligned with the other two circular holes. **See Fig. 5**)



Westin Automotive Products, Inc.
320 W. Covina Blvd
San Dimas, Ca. 91773

6. Locate the M12 Fish Wire (Item 10), M12 carriage square neck bolt (Item 2), and M12 Square Hole Bolt Plate (Item 4). Use the M12 fish wire to guide Item 2 and 4 through the open slot in the frame channel and through the two circular holes. First get Item 2 and 4 through the hole that is furthest from the open slot in the frame channel. **See Fig. 6.** (Note: Unbolting the factory bolt in **Step 3** is to make room in the frame channel so that Item 2 and 4 are able to fit through.)
7. Loosely secure the hitch using (2) M12 Serrated Flange Hex Nut. **See Fig. 7.**
8. Repeat steps for passenger side.
9. Align and adjust the Hitch Assembly as needed, then fully tighten all hardware at this time. Torque all M12 fasteners to 65 ft-lbs and all M10 fasteners to 30 ft-lbs.



CARE INSTRUCTIONS

- REGULAR WAXING IS RECOMMENDED. DO NOT USE ANY TYPE OF POLISH OR WAX THAT MAY CONTAIN ABRASIVES.
- STAINLESS STEEL PRODUCTS CAN BE CLEANED WITH MILD SOAP AND WATER. STAINLESS STEEL POLISH SHOULD BE USED TO POLISH SMALL SCRATCHES.
- GLOSS BLACK FINISHES SHOULD BE CLEANED WITH MILD SOAP AND WATER.



Westin Automotive Products, Inc.
320 W. Covina Blvd
San Dimas, Ca. 91773

Thank you for choosing Westin products
for additional installation assistance please call
Customer Service (800) 793-7846
www.westinautomotive.com



AUTOMOTIVE PRODUCTS, INC.

WARNINGS & NOTICES FOR THE INSTALLATION OF WESTIN TOWING PRODUCTS - CLASS III RECEIVER HITCH

NOTICE

Westin Receiver Hitches are designed to accommodate a 2"- square receiver draw bar rated for class III/IV towing. Closely follow all Westin Installation Instructions for the proper installation of product. Improper installation can result in death, serious injury, and/or product and vehicle damage. In the operation of these products, it is imperative to observe precautions for your personal safety and the safety of others.



WARNING



Failure to follow these instructions could lead to death, personal injury, and / or property damage.

FASTENERS:

All Westin supplied fasteners must be utilized and installed in accordance with the installation instructions and apply torque to the specifications as defined. **DOUBLE CHECK ALL FASTENERS BEFORE INITIAL USE, AND PERIODICALLY IN THE FUTURE TO ENSURE PROPER FUNCTION AND SAFETY.**

DRILLING:

Most Westin products do not require drilling for installation. If drilling is defined as required, use caution when drilling a vehicle. **FAILURE TO REVIEW AN AREA TO BE DRILLED MAY RESULT IN PERSONAL INJURY AND/OR INJURY TO OTHERS AS WELL AS VEHICLE DAMAGE.**

EYE PROTECTION:

ALWAYS WEAR SAFETY GLASSES OR GOGGLES DURING THE INSTALLATION PROCESS TO AVOID PERSONAL INJURY.

MAXIMUM TOWING/CARRYING CAPACITY:

The Westin Receiver Hitches will have a visible tow rating label affixed directly on the product. User should never exceed the vehicle manufacturers maximum tow and weight rating regardless of the capacity of the hitch. **FAILURE TO FOLLOW THESE GUIDELINES WILL VOID THE WESTIN WARRANTY AND MAY RESULT IN PERSONAL INJURY AND/OR INJURY TO OTHERS AS WELL AS VEHICLE DAMAGE.**



Westin Automotive Products, Inc.
320 W. Covina Blvd
San Dimas, Ca. 91773