

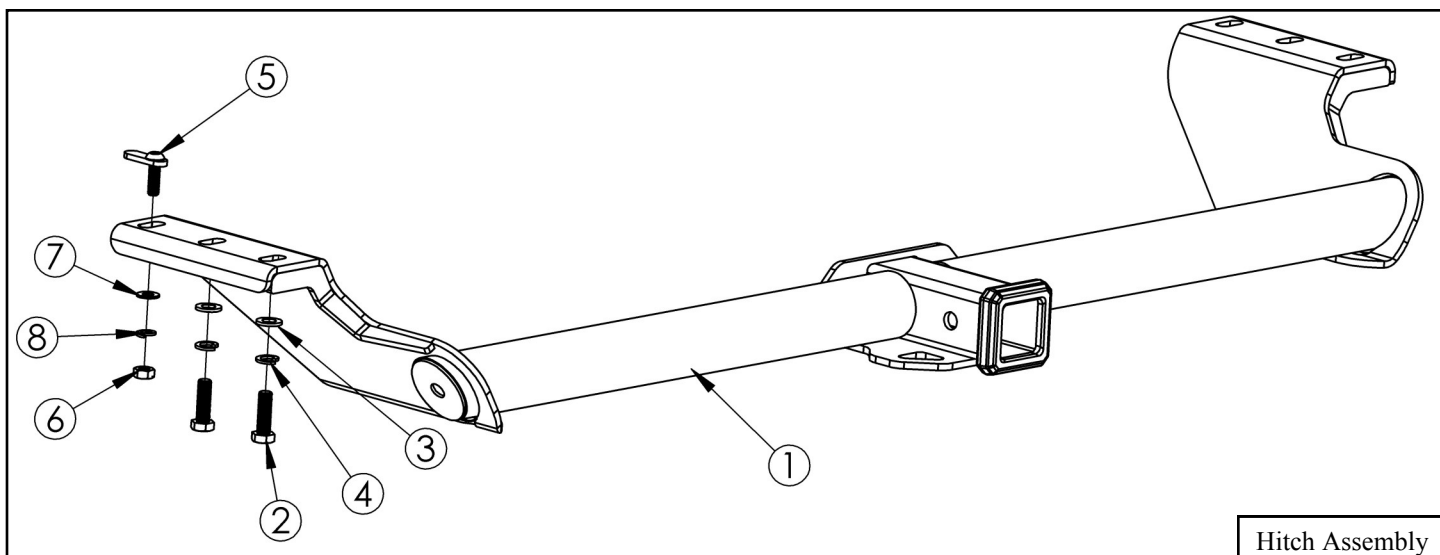


SIGNATURE OF QUALITY
AUTOMOTIVE PRODUCTS, INC.

INSTALLATION INSTRUCTIONS

CLASS 3 RECEIVER HITCH
APPLICATION: ODYSSEY 1999-2015
APP PART # 65-1305

ITEM	QUANTITY	DESCRIPTION	TOOLS NEEDED
1	1	RECEIVER HITCH ASSEMBLY	19MM SOCKET
2	4	M12 HEX CAP SCREW	10MM SOCKET
3	4	M12 FLAT WASHER	DRILL
4	4	M12 SPLIT LOCK WASHER	TORQUE WRENCH
5	2	M10 LONG BOLT PLATE	
6	2	M10 HEX NUT	
7	2	M10 FLAT WASHER	
8	2	M10 SPLIT LOCK WASHER	



Hitch Assembly

WARNING: Never exceed the capacity ratings shown on the receiver hitch or the tow vehicle. See your vehicle's owners guide for towing guidelines.

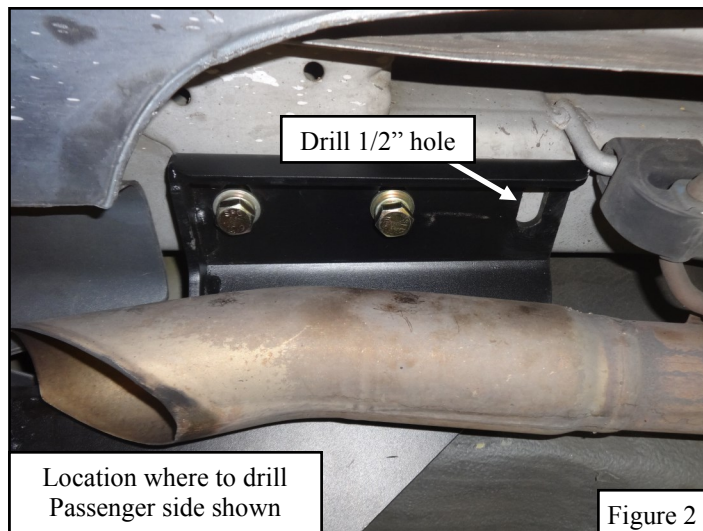
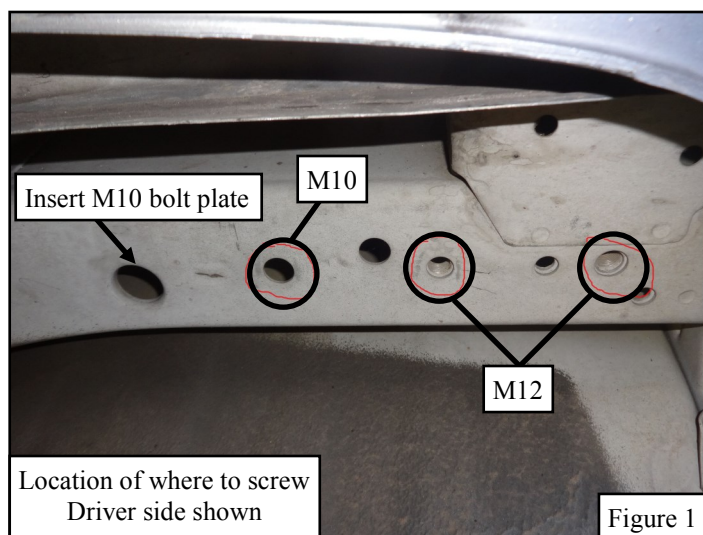
1. Remove contents from box, verify if all parts listed are present and free from damage. Carefully read and understand all instructions before attempting installation. **Failure to identify damage before installation could lead to a rejection of any claim.**
2. Start installation in the rear of the vehicle. Locate holes under the vehicle in where the M12 and M10 hardware will be mounted. **See Figure 1 & 2.**
3. Adjust and align center holes of the receiver hitch assembly as necessary. Loosely secure the receiver hitch assembly to the vehicle. On the passenger side, mark location to drill a 1/2" hole. **See Figure 2.**
4. Remove the receiver hitch assembly from vehicle. On the passenger side drill the 1/2" hole. Clean metal debris from hole.
5. Insert both M10 bolt plates into place. On the driver side, the bolt plate will be placed in the already existing hole. On the passenger side, the bolt plate will be placed in the recently drilled hole. **See Figure 1 & 2.**

NOTICE: This product complies with all safety specifications and requirements defined for V.E.S.C. regulation V-5 & SAE J684



Westin Automotive Products, Inc.
320 Covina Blvd
San Dimas, Ca. 91773

6. With assistance, align and adjust the receiver hitch assembly as necessary with the intended holes. See **Figure 1 & 2**. Loosely secure the receiver hitch assembly to the frame using the supplied M10 and M12 hardware. Refer to **Hitch Assembly** on page 1 for correct placement.
7. Align and adjust the receiver hitch assembly as necessary. Tighten and torque all M10 hardware to 55-60 ft-lbs and M12 hardware to 65-70 ft-lbs.



CARE INSTRUCTIONS

- GLOSS BLACK FINISHES SHOULD BE CLEANED WITH MILD SOAP AND WATER



Westin Automotive Products, Inc.
320 Covina Blvd
San Dimas, Ca. 91773



AUTOMOTIVE PRODUCTS, INC.
San Dimas, California

WARNINGS & NOTICES FOR THE INSTALLATION OF WESTIN TOWING PRODUCTS - CLASS III RECEIVER HITCH

NOTICE

Westin Receiver Hitches are designed to accommodate a 2"- square receiver draw bar rated for class III/IV towing. Closely follow all Westin Installation Instructions for the proper installation of product. Improper installation can result in death, serious injury, and/or product and vehicle damage. In the operation of these products, it is imperative to observe precautions for your personal safety and the safety of others.



WARNING



Failure to follow these instructions could lead to death, personal injury, and / or property damage.

FASTENERS:

All Westin supplied fasteners must be utilized and installed in accordance with the installation instructions and apply torque to the specifications as defined. **DOUBLE CHECK ALL FASTENERS BEFORE INITIAL USE, AND PERIODICALLY IN THE FUTURE TO ENSURE PROPER FUNCTION AND SAFETY.**

DRILLING:

Most Westin products do not require drilling for installation. If drilling is defined as required, use caution when drilling a vehicle. **FAILURE TO REVIEW AN AREA TO BE DRILLED MAY RESULT IN PERSONAL INJURY AND/OR INJURY TO OTHERS AS WELL AS VEHICLE DAMAGE.**

EYE PROTECTION:

ALWAYS WEAR SAFETY GLASSES OR GOGGLES DURING THE INSTALLATION PROCESS TO AVOID PERSONAL INJURY.

MAXIMUM TOWING/CARRYING CAPACITY:

The Westin Receiver Hitches will have a visible tow rating label affixed directly on the product. User should never exceed the vehicle manufacturers maximum tow and weight rating regardless of the capacity of the hitch. **FAILURE TO FOLLOW THESE GUIDELINES WILL VOID THE WESTIN WARRANTY AND MAY RESULT IN PERSONAL INJURY AND/OR INJURY TO OTHERS AS WELL AS VEHICLE DAMAGE.**



Westin Automotive Products, Inc.
320 Covina Blvd
San Dimas, Ca. 91773